

South High



Brand Book





South High About History Taglines	pg 3
Identity Elements Logos Logotypes Use Variations	pg 4-8
Do's & Don'ts	pg 9
Colors	pg 10
Typography	pg 11
Contact & Misc. Info	pg 12

School Name

South High

About

The mission of South High is to prepare all students to reach their highest academic potential, develop skills in technology, demonstrate creative expression, and practice respect for others.

South High will:

- Increase the number of South High on track for graduation.
- Increase the number of South High that are connected to the school community.
- Increase transparency and communication with community stakeholders.
- Incorporate and increase the use of best instructional practices in every classroom.

History

South High, established in 1898, is a pathway school serving grades 9-12. South High is a cornerstone in the South Omaha community, serving a diverse and dynamic student population. South is located at 4519 S 24th Street. Our mascot, the “Packer Bull,” honors the rich history of the waves of immigrants that built South Omaha and worked in the historic Omaha Stockyards and meat packing plants.

Students at South High may choose from the following pathways: an award-winning Performing and Fine Arts Pathway, a Technology and Data Pathway, or a Media Arts Pathway. Each pathway allows students to explore their area of interest, connect with local organizations and businesses, and acquire the necessary skills to be successful in post-secondary education or in their chosen careers.

In addition, one of the many strengths at South High is the Dual Language program, which is integrated into all pathways. South High has the only high school Dual Language program in the metropolitan area.

In 2021-22 South High launch Freshman Academy which is designed to welcome freshmen to the high school experience and prepare them for their high school careers. In addition to studying the core curriculum, freshmen are placed in small learning groups that build vital skills necessary for high school and post-secondary opportunities.

We are honored to serve the South Omaha community and proud of the myriad accomplishments of our students. GO PACK!

Tag Lines

#GoPack, #THESouthHigh, #OnceAPackerAlwaysAPacker



Logo



Logo is the graphical representation of an organization. It is the first impression others have of our school. South High School's logo incorporates the school name and the image of the mascot a bull arranged as you see here.

The school name arranged as you see is a logotype, it is a brand's name set in a special typeface in a particular way. The South logotype can be used alone. The bull image alone is considered an icon, a representative symbol.

Academic Seal

This is a representative of academics at South High School.



Athletics and Activities

This logo is one example for South High School Athletics and Activities. The name of the school name or sport/activity can be added below or the logo can be used by itself.



South Lock-up

A lock-up is the arrangement of the logo separated by a line from the academic crest. Do not tip / rotate the logo.



Omaha Public Schools/South Lock-up

This lock-up is the arrangement of the Omaha Public Schools logo and the South logo separated by a line. If the logo and icon are in color, the OPS logo must also be in color.



Lock-up

Typesetting refers to the process of arranging type with the icon.



SOUTH HIGH

Identity Elements



Full Color Logo
Overall general
school usage



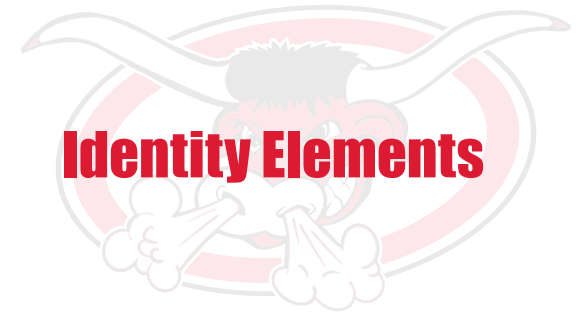
Solid Black Logo



Solid Red Logo



Solid White Logo
(White logo on a
colored background)
example: White on red



Logo | Logotype | Use Variations



Full Color Logotype
General school usage



Solid Black Logotype



Solid Red Logotype



Solid White Logotype
(White logo on a colored background)
example: White on red



Full Color Academic Seal/Logo
Academic school usage



Solid Black Academic Seal/Logo



Solid Red Academic Seal/Logo



Solid White Academic Seal/Logo
(White logo on a colored background)
example: White on red

Identity Elements



Full Color Athletic & Activities Logo
Sports and school activity usage



Solid Black Athletic & Activities Logo



Solid Red Athletic & Activities Logo



Solid White Athletic & Activities Logo
(White logo on a colored background)
example: White on red

Logo | Logotype | Use Variations

Full Color Logo With Subtext - Athletic & Activities
Sports and school activity usage



Solid Black



Solid Red



Solid White

example: White on red

ATHLETICS NAME can be replaced with any sport or activity name with approved templates.

Fun Activities/Sports Branding uses

Random ways that are acceptable usage of South Branding



Just the Packer "Bull" head

It's also acceptable usage of South Branding, to have just the head alone.



Solid Black

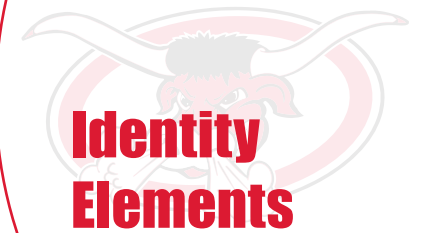


Solid Red



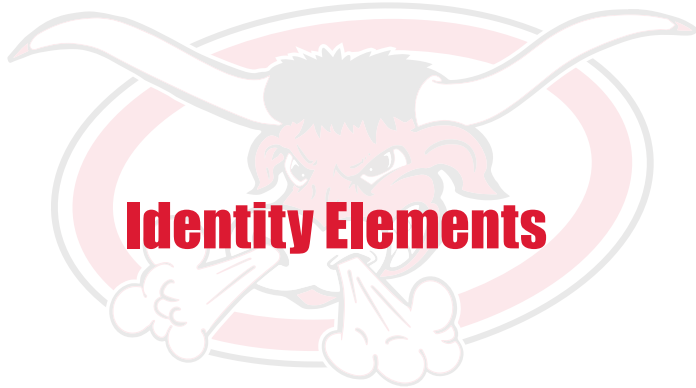
Solid White

example: White on red



Logo | Logotype | Use Variations

College & Career Academies And Pathways
Logos for South High School



Don't

Stretch or scrunch.



Don't

Change the fonts.



Don't

Switch out colors.



Don't

Place on top of photos or complex backgrounds.



Don't

Use elements on backgrounds that don't have contrast.



Don't

Tip, rotate or add extreme drop shadows.



Don't

Crowd the logo.



Give the logo some space around it
– about equal to the "S" in school.



Don't

Make it so small that it is difficult to read.

The minimum allowed length is 1.5 inches for both the horizontal and vertical logos. An example of the minimum length is shown here.



1.5 inches wide



1.5 inches tall





Colors

Red

C:0 M:100 Y:80 K:5
R:201 G:18 B:53
PMS equivalent: 186C
Hexadecimal: e11837



Black



White

(White logo on a colored background)
example: White on red



Headline Typeface

Gill Sans font family
(Gill Sans Light, Regular or
Gill Sans Semi-Bold) –

To be used as headline typeface for all publications. Gill Sans is the preferred font; however, other weights and variations within the type family are permitted. (i.e. Light, Regular Semi-Bold, etc.)

Gill Sans Light
Gill Sans Regular
Gill Sans Semi Bold

Secondary Headline Typeface

Gill Sans Semi-Bold, Bold
and Ultra Bold –

To be used for secondary headline typefaces for all South High School publications. Please use a typesize that is proportional to the copy and headline type sizes. Secondary headlines should not be smaller or similar size to the copy or headline type sizes.

Gill Sans Regular
Gill Sans Semi Bold
Gill Sans Bold
Gill Sans Ultra Bold

Copy / Body Text Typeface

Gill Sans is the preferred font; however, other weights and variations within the type family are permitted. (i.e. Light, Regular Semi-Bold, etc.)

Gill Sans Light
Gill Sans Regular
Gill Sans Semi Bold

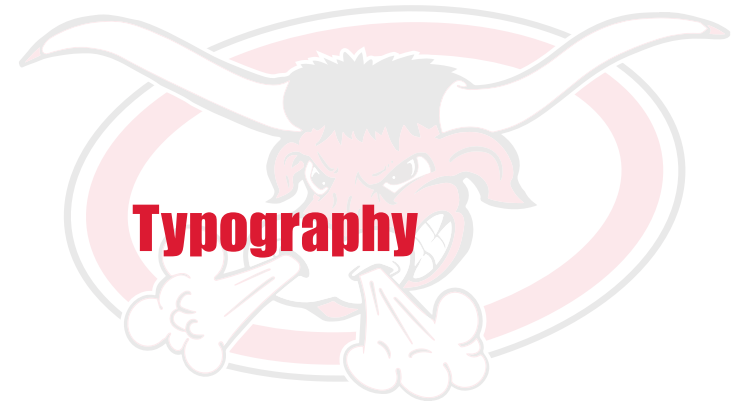
Logotype / Speciality fonts

Mokoko

(Mokoko) This is the font family used Primarily in the Logotype. A display font, and has only one type in its font family. This is likely great for signs and bold statements. But primarily just used in the logo itself. This font can be used, but is not recommended for general verbiage.

Scout

This is the font used in the Sports "S". A display font used for sporting events. This is likely great for signs and bold statements. But primarily just used in the logo itself. This font can be used, but is not recommended for general verbiage.





Contact Information and Social Media

Address: 4519 South 24th Street
Omaha, NE 68107-1894

Main Office: 531-299-2540

Website: www.ops.org/South

Social Media

Twitter: @OPS_SouthHigh

Facebook: OmahaSouthHighSchool



South's Fight Song

"Hail to the Varsity"

"South High Packers, South High Packers

Fight Fight Fight Fight Fight

Take the ball right down the field/court,

And fight with all your might

SHS

Go you Packers,

Fight you Packers,

Really raise that score

'Cause we'll beat them

We'll defeat them

Go South go"

